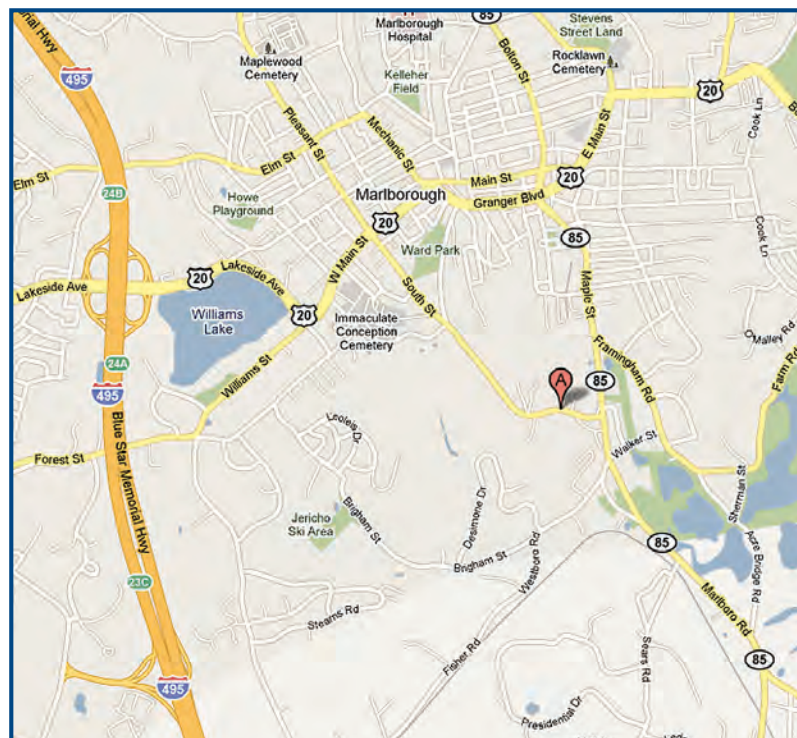
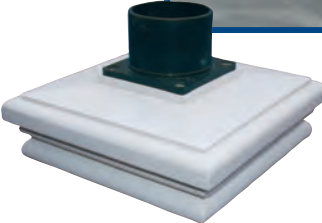




GFI outlet, mailbox lettering and engraving available. Styles may vary.

**Mailbox and lantern posts are available in cedar, vinyl and granite.**

For more styles visit our showroom.



#### Directions from the North

Take I-495 South toward Marlboro  
At exit 24A, take Ramp (RIGHT) onto US-20 [Lakeside Ave] toward Marlboro  
Turn RIGHT (South-East) onto South St

#### Directions from the South

Take I-495 North toward Lowell  
At exit 24A, take Ramp (RIGHT) onto US-20 [Lakeside Ave] toward Marlboro  
Turn RIGHT (South-East) onto South St

#### Directions from the East

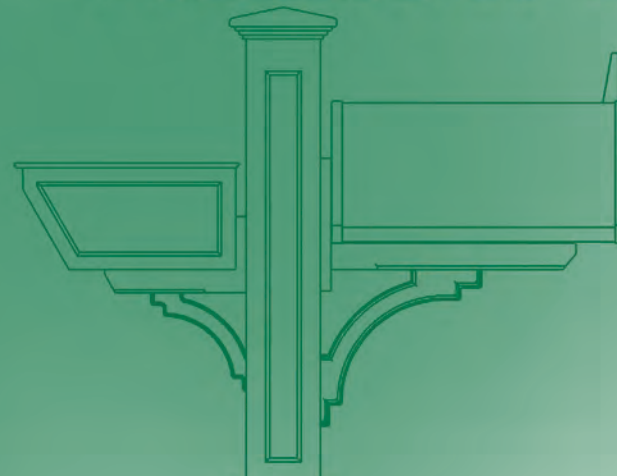
Take Route 9 West toward Worcester  
Turn RIGHT (North) onto Route 85 [Cordaville Rd]  
Keep STRAIGHT onto Route 85 [Marlboro Rd]  
Bear RIGHT (North) onto Route 85 [Maple St]  
Turn LEFT (West) onto South St

#### Directions from the West

Take I-290 East toward Shrewsbury / Marlboro  
At exit 26A, take Ramp (RIGHT) onto I-495 toward I-495 / Cape Cod  
At exit 24A, take Ramp (RIGHT) onto US-20 [Lakeside Ave] toward US-20 / Marlboro  
Turn RIGHT (South-East) onto South St



# ← ARROW FENCE CO. INC. →



**MAILBOX & LAMP POSTS**

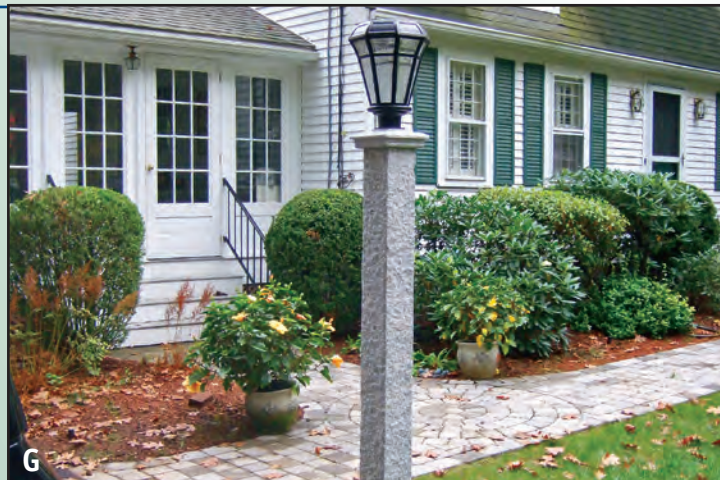
[www.arrowfenceonline.com](http://www.arrowfenceonline.com)

# ← ARROW FENCE CO. INC. →

360 South Street, Marlboro, MA 01752  
Phone 508.485.3334 Fax 508.460.3869  
[www.arrowfenceonline.com](http://www.arrowfenceonline.com)



# ← ARROW FENCE CO. INC. →



[www.arrowfenceonline.com](http://www.arrowfenceonline.com) | [sales@arrowfenceonline.com](mailto:sales@arrowfenceonline.com)